



# MAGNETIC SEPARATION

Integrating Plastic Technologies Since 1965

## Drawer Magnet

### Reliable Metal Free Processing

Drawer Magnet Filters install at the throat opening of your machines to trap ferrous contaminants and protect your equipment and the purity of your products.

Hamilton Drawer Magnets now have a greater surface holding force. That means more complete removal of contaminants, and less chance of 'wipe-off'.

### Easy to Clean and Monitor

Clear 3/8" polycarbonate drawer front lets you monitor resin flow and trap iron accumulation at a glance. When you're ready to clean the magnetic cartridges, just shut the slide gate, allow the housing to empty, and remove the drawer module. The drawer opening also give you plenty of clearance, eliminating the chance of any accidental 'wipe-off' as you remove the drawer.



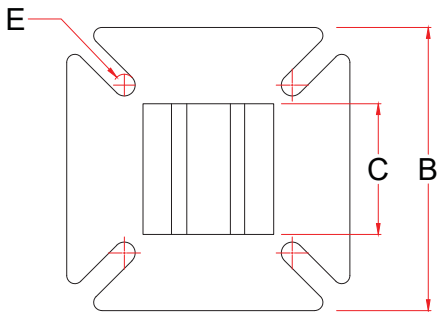
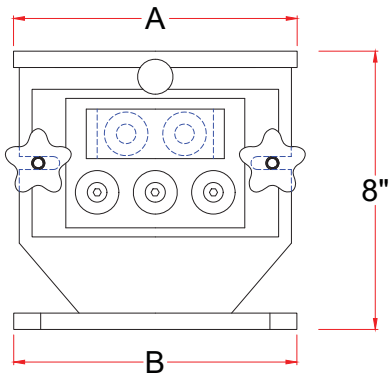
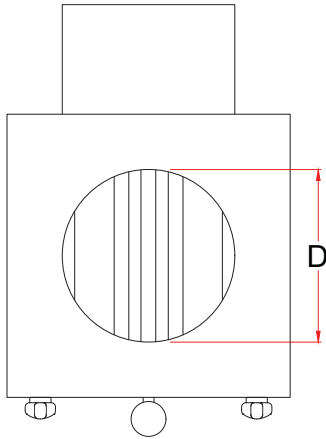
### Added Value:

- Housings are constructed from rugged 11-gauge steel built to support symmetrical compression loads up to 10, 000 pounds.
- Mounting plates are made of 3/8" steel secure mounting on any machine throat.
- Complete with internal shut off slide plate.
- 1/2" thick polycarbonate magnet drawer face.
- Stainless steel handle and magnet back plate.
- Standard mounting for all Hamilton Plastic System hoppers, feeders, and in-line mixers.





# Magnetic Separation - Drawer Magnet



## Optional Features:

- 2" Drain Port mounted to back of the magnet housing.
- 2" Purge spout mounted to side of the magnet housing.
- Rare-earth magnets
- Stainless Steel housing construction
- Customer specific mounting holes, in order to fit any feed throat (Note: Standard units have no mounting holes on top plate).

## SPECIFICATIONS:

Model	A	B	C	D	E	Magnets
HDM3	4" x 4" x 3/8" Thick	4" x 4" x 3/8" Thick	2" Square	2" Dia.	Ø0.5"	3
HDM5	6.5" x 6.5" x 3/8" Thick	6.5" x 6.5" x 3/8" Thick	3" Square	3" Dia.	Ø0.5"	5
HDM7	8" x 8" x 3/8" Thick	8" x 8" x 3/8" Thick	4.5" Square	5" Dia.	Ø0.5"	7

