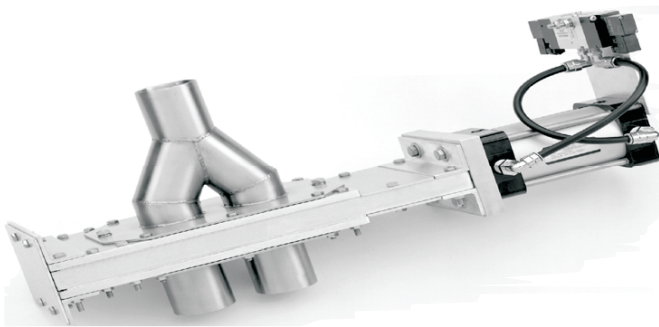




Integrating plastic technologies
since 1965

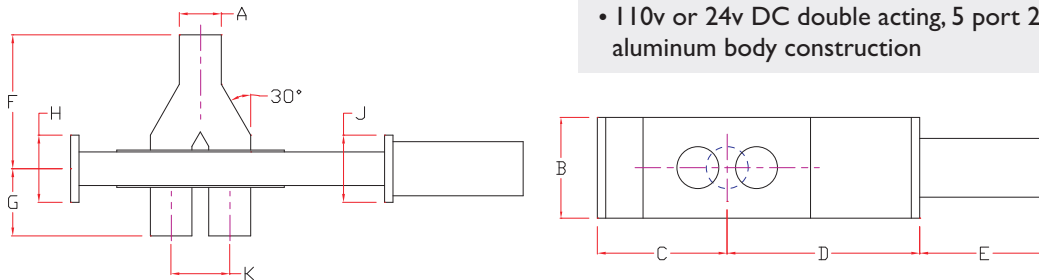
2 WAY DIVERTER VALVE



Diverts all dry materials in pneumatic conveying systems.

FEATURES:

- Works in vacuum or pressure systems
- Powerful double acting cylinder
- Inlet & Outlet sizes –2"OD to 6 5/8" OD
- Manual operation available
- Self-cleaning
- Positive reliable sealing
- Minimal material contact
- Unobstructed flow
- Available in stainless steel
- Double acting cushioned air cylinder
- Cylinder piston comes with internal magnet strip for activating positioning switches (switches optional)
- 110v or 24v DC double acting, 5 port 2 position solenoid aluminum body construction



DIMENSIONS:

| Model | A | B | C | D | E | F | G | H | J | K | Weight/lbs | Cylinder size |
|--------|-------|----|--------|--------|------|-------|-----|-----|------|-----|------------|---------------|
| DV200 | 2 | 5 | 5.75 | 9.875 | 6.75 | 7.5 | 4 | 4 | 4 | 2.5 | 15 | 3.25 x 2.5 |
| DV2375 | 2.375 | 6 | 7.75 | 11.5 | 7.75 | 10 | 5 | 4 | 4 | 3.5 | 25 | 3.25 x 3.5 |
| DV250 | 2.5 | 6 | 7.75 | 11.5 | 7.75 | 8 | 4 | 4 | 4 | 3.5 | 25 | 3.25 x 3.5 |
| DV300 | 3 | 6 | 7.75 | 11.5 | 7.75 | 8.5 | 4 | 4 | 4 | 3.5 | 30 | 3.25 x 3.5 |
| DV350 | 3.5 | 7 | 10.5 | 13.875 | 9.25 | 12.5 | 6 | 4.5 | 5.75 | 5 | 30 | 4.0 x 5.0 |
| DV400 | 4 | 7 | 10.5 | 13.875 | 9.25 | 10.5 | 4 | 4.5 | 5 | 5 | 45 | 4.0 x 5.0 |
| DV450 | 4.5 | 9 | 12.75 | 16.625 | 10.5 | 13.5 | 6 | 4.5 | 5.75 | 6 | 45 | 5.0 x 6.0 |
| DV500 | 5 | 9 | 12.75 | 16.625 | 10.5 | 12.5 | 5 | 4.5 | 5.75 | 6 | 65 | 5.0 x 6.0 |
| DV5563 | 5.563 | 10 | 14.75 | 18.625 | 11.5 | 15.5 | 7.5 | 4.5 | 5.75 | 7 | 65 | 5.0 x 7.0 |
| DV600 | 6 | 10 | 14.75 | 18.625 | 11.5 | 13.75 | 5 | 4.5 | 5.75 | 7 | 80 | 5.0 x 7.0 |
| DV6625 | 6.625 | 11 | 21.375 | 24.875 | 15 | 15.5 | 7 | 4.5 | 7 | 10 | 125 | 6.0 x 10.0 |

Notes:

- All dimensions are in inches.
- Specify wall thickness.
- 80 PSIG minimum, 200 PSIG maximum air actuating pressure.

- Dry filtered and lubricated actuating air recommended.
- Maximum operating temperature is 180 F continuous service.
- All diverters must be supported independently of tube or pipe.

Hamilton Plastic Systems Ltd.
230 Brunel Rd., Mississauga, ON L4Z 1T5
905-890-0055 • 1-800-590-5546
sales@HamiltonPSL.com
www.hamiltonplasticsystems.com

Representative:



Integrating plastic technologies since 1965