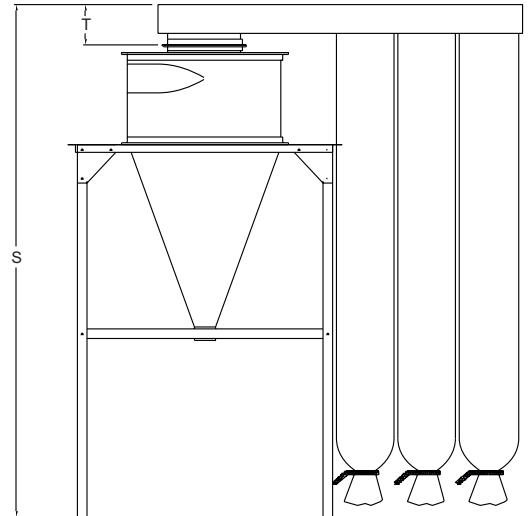
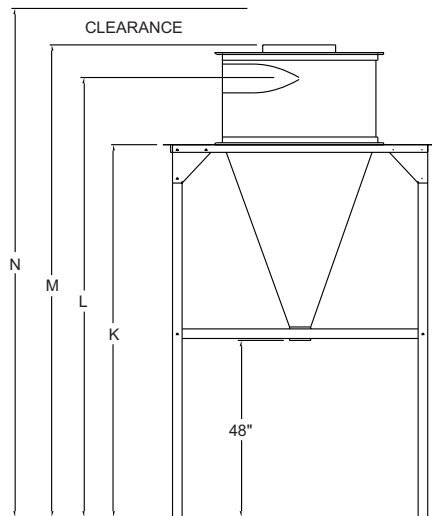
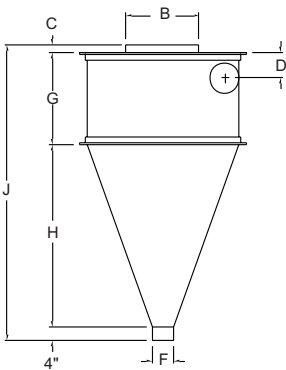
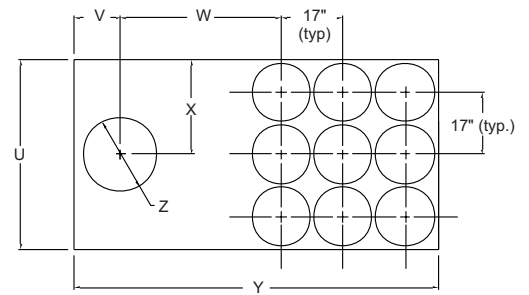
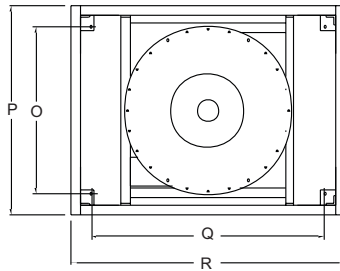
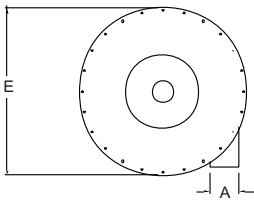




Integrating plastic technologies
since 1965

CYCLONE RECEIVERS



CYCLONE

CYCLONE WITH STAND

**CYCLONE WITH SIDE MOUNTED
FILTER HEAD**

Hamilton cyclones are designed for efficiency and performance. Featuring 14 gauge steel and angle iron ring construction, Hamilton cyclones are manufactured to fit the customer's needs. The proper cyclone size is essential in your material handling system. Hamilton's cyclones are available in capacities ranging from 300 CFM to over 15,000 CFM .

SPECIFICATIONS:

Cyclone Size →	4	5	6	7	8	9	10	11	13	15	17	19
A	3	4	4	5	6	7	8	10	12	14	16	16
B	8	10	12	14	16	18	20	22	26	30	34	38
C	2	2	2	2	2	2	2	2	4	6	6 1/2	9
D	4 5/8	4 5/8	4 5/8	5 5/8	6 1/8	6 5/8	7 1/8	8	15	18	19 1/2	20
E	20 1/8	24 1/8	28 1/8	33 1/8	38 1/8	42 1/8	46 1/8	50 1/8	59 1/8	67 1/8	75 1/8	84 1/8
F	5	6	6	6	6	6	6	10	10	10	10	10
G	10 3/8	12 5/8	15 1/8	17 5/8	20 1/8	22 5/8	25 1/8	27 5/8	34 1/2	39 1/2	44 1/2	47 1/2
H	29 3/8	32 1/2	36	39 1/2	43	46 1/2	50	53 1/2	60 1/2	67 1/2	74 1/2	81 1/2
J	45 3/8	51 1/8	57 1/8	63 1/8	69 1/8	75 1/8	81 1/8	87	103	117	129 1/2	140
K		85 1/4	88 1/4	92 1/4	95 1/4	98 1/4	102 1/4	106 1/4	112 1/4	119 1/4	126 1/4	133 1/4
L		93 1/4	98 3/4	104 1/4	109 1/4	114 1/4	120 1/4	125 3/4	135 3/4	146 3/4	157 3/4	167 3/4
M		99 3/4	105 1/4	111 3/4	117 1/4	122 3/4	129 1/4	135 3/4	150 3/4	164 3/4	177 1/4	187 3/4
N		108	114	120	126	132	144	150	168	180	198	212
O		29 3/4	29 3/4	29 3/4	45 3/4	45 3/4	45 3/4	45 3/4	81 3/4	81 3/4	81 3/4	81 3/4
P		41	41	41	57	57	57	57	93	93	93	93
Q		64	64	64	64	64	64	67 1/2	76 1/2	84 1/2	92 1/2	101 1/2
R		75 1/4	75 1/4	75 1/4	75 1/4	75 1/4	75 1/4	78 3/4	87 3/4	95 3/4	103 3/4	112 3/4
S	102	109	114 1/2	123	128 1/2	134	140 1/2	151	166	182 1/4	197 1/2	208
T	9 1/4	9 1/4	9 1/4	11 1/4	11 1/4	11 1/4	11 1/4	15 1/4	15 1/4	17 1/2	20 1/4	20 1/4
U	18	18	18	35	35	35	35	35	52	52	69	69
V	7	8	9	10	11	12	13	14	16	18	20	22
W	46	48	46	46	46	45	44	46	57	57	60	65
X	9	9	9	17 1/2	17 1/2	17 1/2	17 1/2	17 1/2	26	26	34 1/2	34 1/2
Y	79	99	98	82	83	100	100	120	116	135	140	147
Z	8	10	12	14	16	18	20	22	26	30	34	38
# of bags (row x column)	2 (1x2)	3 (1x3)	3 (1x3)	4 (2x2)	4 (2x2)	6 (2x3)	6 (2x3)	8 (2x4)	9 (3x3)	12 (3x4)	16 (4x4)	16 (4x4)
Bag Length	120	120	120	120	120	120	144	144	144	144	180	180
CFM	349	545	785	1069	1396	1767	2181	2640	3687	4908	6304	7876